

Speaking Part 1

- 1 Discuss these questions with a partner.

If you were given a free holiday in any city in the world ...

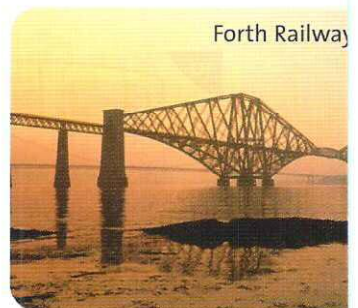
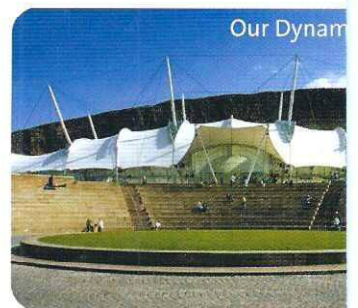
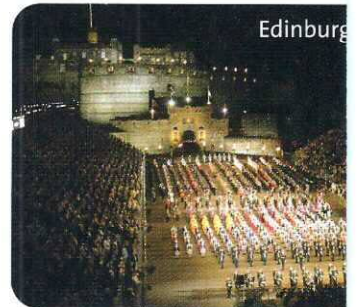
- 1 Which city would you like to visit, and why?
- 2 What would you enjoy doing during the day?
- 3 How would you spend your evenings there?
- 4 Where would you prefer to stay, and why?
- 5 Think about your last holiday. What do you remember most?

Reading

- 2 Here is some information about four of the attractions in Edinburgh, the capital of Scotland. Read about one attraction at a time, and discuss with a partner why it is popular. These phrases may be useful.

It appeals to people who ...
It attracts people who ...
It's a good place to go if ...

- A **EDINBURGH CASTLE** is well known throughout the world. It used to be the home of Scotland's kings and queens and it has some impressive buildings from the 15th and 16th centuries. It stands on Castle Rock, a massive volcanic rock in the heart of the city, with a magnificent view of the surrounding countryside and of the Firth of Forth, an inlet of the sea. There have been settlements on Castle Rock for nearly 3,000 years because of its good position. The Military Tattoo, a floodlit spectacle of military drum and bagpipe music, takes place at Edinburgh Castle every August, as part of the Edinburgh Festival.
- B **OUR DYNAMIC EARTH** is the most exciting attraction to have opened in Edinburgh in recent times. Inside a striking, purpose-built tented structure, there is plenty of interactive entertainment on offer for both children and adults alike. Our Dynamic Earth explores the extremes of our planet Earth. Travel back in time to witness the Big Bang, feel the earth shaken by an erupting volcano, fly over glaciers, feel the chill of polar ice, and get caught in a tropical rainstorm. It's pre-historic, volcanic, antarctic, dynamic, fantastic! Out of this world ... but about this planet!
- C In the 19th century, people travelling by train between Edinburgh and places north of the Firth of Forth had to change to a ferry to cross the water, then transfer to another train. This was very time-consuming. The solution was to construct the **FORTH RAILWAY BRIDGE** a few kilometres west of Edinburgh. It was opened in 1890, and has been in continuous use ever since.
- D Situated under one end of the Forth Bridge, **DEEP SEA WORLD** brings you face to face with the creatures of the deep. From 112 metres of underwater tunnels you can enjoy a spectacular view of the piranhas and other tropical fish in the aquarium surrounding you. Or you can go scuba diving among the sharks. You must be at least 16 and in reasonably good health for this, because swimming with sharks can be pretty terrifying! Teachers – contact Deep Sea World about how we can help the children in your class to improve their scientific skills.



Test spot

Matching tasks like this are sometimes used in the General Training Reading Module. It's quickest to read one of the texts, then check all the sentences to find the ones that refer to it. The skills you need are also useful for Academic Reading. There may be more than one sentence about each text. Each sentence has only one right answer. ... TF 2

- 3 For which attraction is each of the following statements true?

Write the correct letter A–D.

Example:

This attraction is located in the city centre. **A**
(The relevant phrase in the passage is underlined.)

Answer:

- This was built to save people time.
- An unusual building was designed to house this attraction.
- There is an age limit on one of the activities at this attraction.
- This attraction is used in the same way as it was over 100 years ago.
- A performance is given here once a year.
- Educational activities can be arranged here on request.
- In this attraction visitors can learn about different regions of the world.

Grammar Cause, purpose and result

- 4 Complete each sentence 1–6 with the correct ending a–g from the box below. Think about both the grammar and the meaning. There is one extra ending which you will not need to use.

- Castle Rock has been inhabited for nearly 3,000 years because of
- The Forth Bridge was constructed so
- You must be reasonably healthy to swim with sharks, because
- The Forth Bridge was made particularly strong because
- A lot of interactive exhibits were used in Our Dynamic Earth so that
- Our Dynamic Earth is popular with children because of

- it seems more like entertainment than education.
- trains could cross the river.
- it would appeal to children.
- its good position.
- the interactive exhibits.
- it can be pretty terrifying!
- many people were afraid it would collapse.

- 5 Now complete these rules by choosing the correct alternatives.

EXAMPLE: *Because* is used to introduce a **clause** / **purpose**. It is followed by a **clause** / **infinitive** / **noun phrase**.

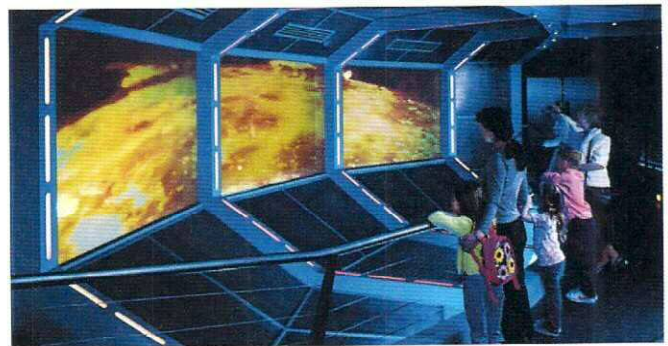
- Because of* is used to introduce a *clause* / *purpose*. It is followed by a *clause* / *noun phrase*.
- So (that)* is used to introduce a *clause* / *purpose*. It is followed by a *clause* / *noun phrase*.

- 6 What is the difference between the meanings of *so* in these two sentences?

- The underwater tunnels at Deep Sea World were designed so visitors could get close to the fish.
- Tickets for the Military Tattoo sell very quickly, so it's worth booking as early as possible.

Decide if *so* in each of these sentences introduces a purpose (when *so that* is also possible, particularly in writing) or a result (when *so that* isn't possible). In two sentences, both meanings are possible.

- Our Dynamic Earth was constructed on a former industrial site so it would help to improve that district of Edinburgh.
- The Forth Bridge is a striking structure so it is well known around the world.
- The water in Deep Sea World is heated so tropical fish can survive there.
- Castle Rock is an extinct volcano so there is no danger of an eruption.
- Our Dynamic Earth offers plenty of exciting activities so visitors have the experience of a lifetime.



G ... page 138

- 7 Talk to a partner about living in a city. Use *because*, *because of* and *so (that)* to expand your answers. This will help you with Part 3 of the Speaking Module. Here are some suggestions of ways to begin:

Living in a city is good/bad for young people because of ...

A lot of people move to cities so that ...

Cities can be exciting because ...